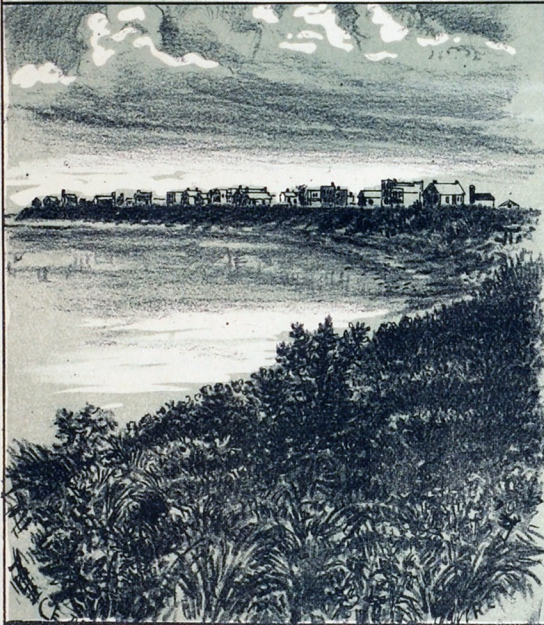
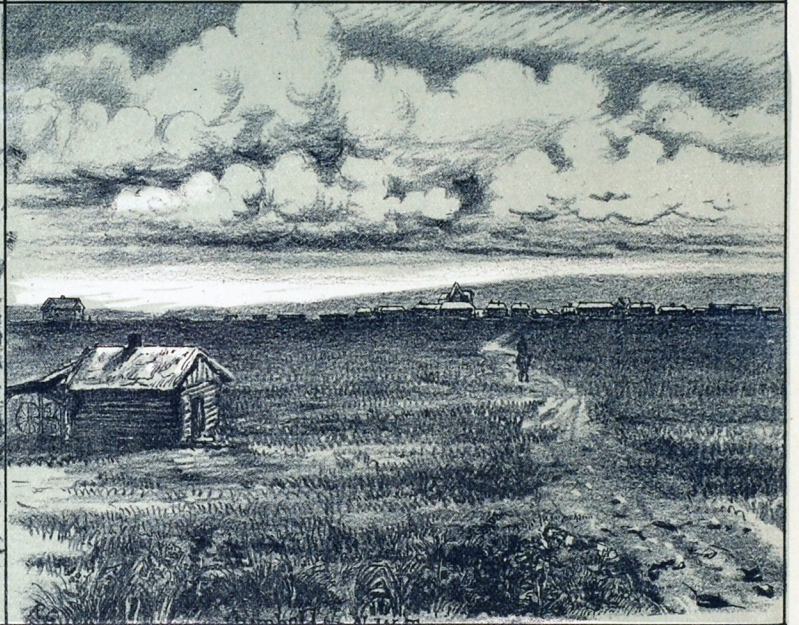


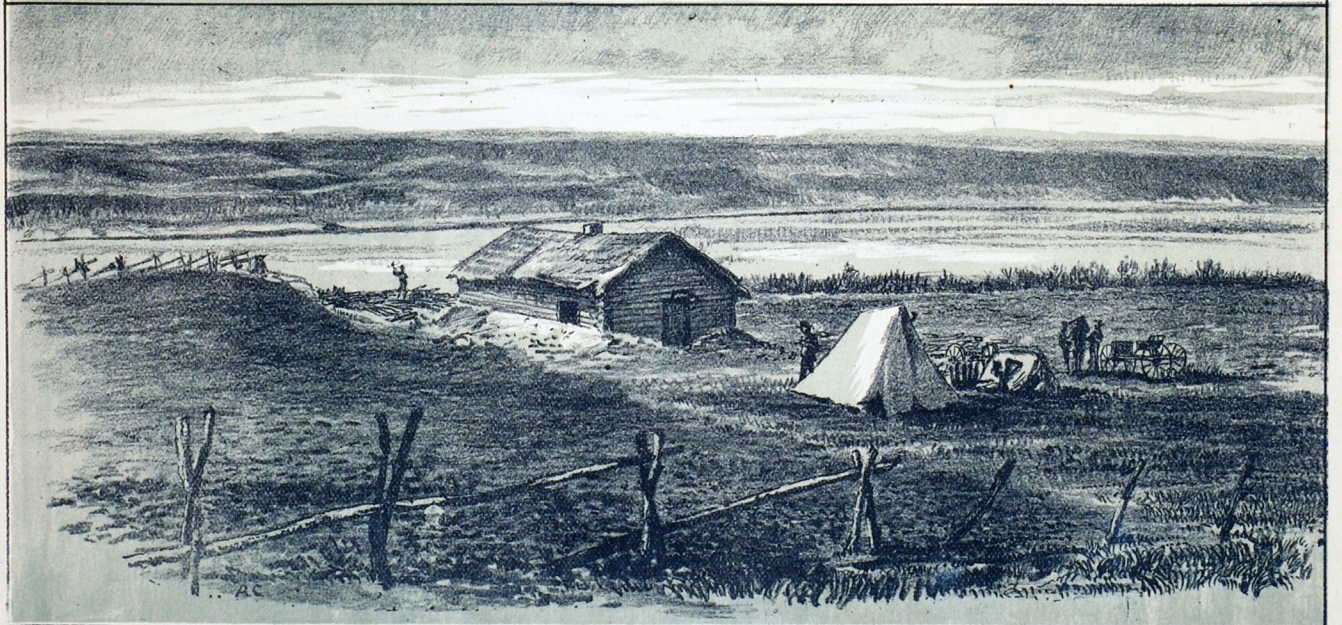
FORT QU'APPELLE, N.W.T. (from a Photograph).



PRINCE ALBERT SETTLEMENT,
WHERE IRVINE AND CROZIER NOW HOLD THE FORT.



HUMBOLDT, AN IMPORTANT TELEGRAPH STATION.



CLARKE'S CROSSING, ON THE SOUTH SASKATCHEWAN, WHERE GENERAL MIDDLETON'S EXPEDITION
IS EXPECTED TO CROSS (from a Photograph).